

# ANNOUNCING THE NEW XEROX 6204...

## New Low Cost Wide Format Digital Solution

Now Available From  
EAST BAY BLUE PRINT & SUPPLY CO., INC.



- ◆ **Compact “single footprint”**  
*Scanner, Printer all in one small package!*
- ◆ **5 “D” size prints per minute**  
*50 pages in just 10 minutes!*
- ◆ **Superb 600 x 600 dpi print quality**  
*with 256 grayscales ... high yield, low cost ink*
- ◆ **Available as either a printer or scanner/printer/copier; 1 or 2 rolls**

*The Xerox 6204 is an all-new breakthrough product and it's the best we've ever seen! It's a high quality, low cost digital print-copy-scan solution that packs a lot of performance into one*

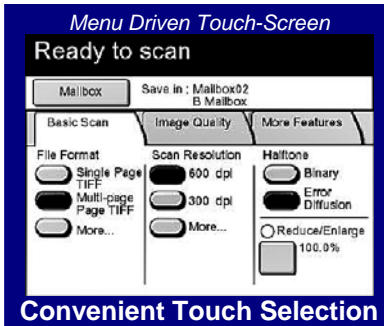
*small package. It's very easy to operate, its print quality is superb and it's one the most reliable printer/copiers ever!*

*Add up what you're now spending (money and time) for plotting and copying then come in and see why we think that this is the best wide format solution from Xerox in 20 years!*



Logical, uncluttered control panel

Easy to use



Menu Driven Touch-Screen

Convenient Touch Selection



Very reliable... low cost maintenance

Loading paper is  
push button simple



Compact unit includes printer and scanner

**New Xerox 6204**  
Digital Printer-Copier-Scanner

**Print/Plot:** The Xerox 6204 connects to your network just like any other network printer and its built in controller means no dedicated PC. Print full sets quickly and easily from AutoCAD, Windows programs, plot files and/or scanned images using the included BT Plot Assistant Software.

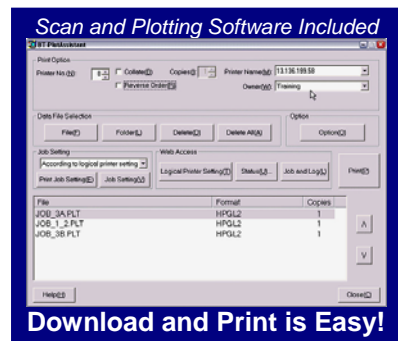
**Copy:** The Xerox 6204 has full copier capability: scan once: (one or many drawings) and let the Xerox 6204 make prints and full sets automatically in correct page order; reduction and enlargement from 25-400% with complete image quality controls including “inverse” and “transform” to make positive prints from old blue prints.

**Scan:** Copy paper drawings into popular “.tif” or “.pdf” files to send over the internet for a quick response; Convert your stacks of paper plans into a safe and secure digital library for immediate reference on your PC or laptop. Recapture valuable storage space and eliminate tedious filing and index maintenance.



Built in Controller

Quick Network Connection



Scan and Plotting Software Included

Download and Print is Easy!

Contact:

**EAST BAY BLUE PRINT & SUPPLY CO., INC.**

Paul Bailey-Gates, Account Manager  
Cell: 510 410-5575

# XEROX 6204 KEY FEATURES AND SPECIFICATIONS

- **UPGRADEABLE:** *Speed:* from 4 to 5 Ds per minute; *Rolls:* Upgradeable from 1 to 2 rolls
- **ADD OPTIONS** (now or in the future): including Scan-to-Net and PostScript/PDF
- **HIGH RESOLUTION:** 600 dpi scanning; 600 dpi printing for exceptionally sharp fine-line details
- **BUILT-IN CONTROLLER** (no dedicated PC) with built-in security and a web server for remote administration
- **FULL COMPLEMENT OF SOFTWARE** tools for application printing, sets production, scan-to-file, and printer administration
- Choice of **FRONT OR BACK EXIT** for originals... allows placing the printer close to a wall
- **AUTOMATIC RECOGNITION OF ALL POPULAR FORMATS**, including HPGL, CALS, PostScript, PDF, and more (PostScript/PDF are optional)
- **ENERGY STAR CERTIFIED**
- Total Satisfaction Guarantee still unmatched by the competition

## Quick Specifications:

### PRINTER

Media Supply	Standard: 1 roll and Cut Sheet By-Pass inserter; <b>Optional:</b> 2nd roll
Media Type	Bond, Vellum, Film, Tracing Paper
Print width	Up to 36"
Resolution	600 dpi
Process Speed	2.36 inches per second (ips)
Throughput	Standard: 4 D/min.; Optional: 5 D/min.
Power Requirements	120V, 12 Amps; standard three wire grounded outlet
Weight	518 lbs. (printer); 538 lbs. (printer/copier)
Dimensions	Printer/Copier: 51.6" W x 22" D x 46" H Printer-only Configuration (no scanner): 51.6" W x 22" D x 46" H
Finishing	Output catch-tray capacity: 20 D-size sheets

### SCANNER

Scan speed	3 inches per second
Optical resolution	600 dpi
Grayscale levels	256
Max. document input size	38" wide x 49.2' long (36" maximum captured image width)
Max. document thickness	0.13"
Electronic collation	99 sets
Optional document catch tray capacity	20 sheets

### EMBEDDED (BUILT-IN) CONTROLLER

Memory	1.28 GB, standard
Hard Disk	40 GB, min.
Data Formats	Standard: HPGL, HPGL/2, HP-RTL, TIFF 6.0, FX-MMR, VRF, VCGL, CALS1; <b>Optional:</b> Adobe PostScript 3 / PDF
Interfaces	10 BaseT / 100 Base TX Ethernet (RJ-45 connector)
Network Protocols	TCP/IP with lpr/lpd
Client Software	BT Plot Assistant, Network TWAIN driver, Wide Format Scan Service with Viewer/Editor, Web Administrator; Printer drivers - Windows GDI: XP/2000/98 Printer drivers - AutoCAD HDI: 2000 & 2000i, 2002, 2004, 2006; ADI - AutoCAD r14
Scan-to-Net file formats	TIFF (Single/Multi-page), PDF (Single/Multi-page), CALS 1
Job Accounting	Job log - view/print/export